

Nautinect autopilot

Congratulations on purchasing the Nautinect autopilot. You are one of the early adopters. The product is in full development and is only getting better by the day. This is the quick-setup manual, a full manual can be downloaded from the Nautinect website.

Installation

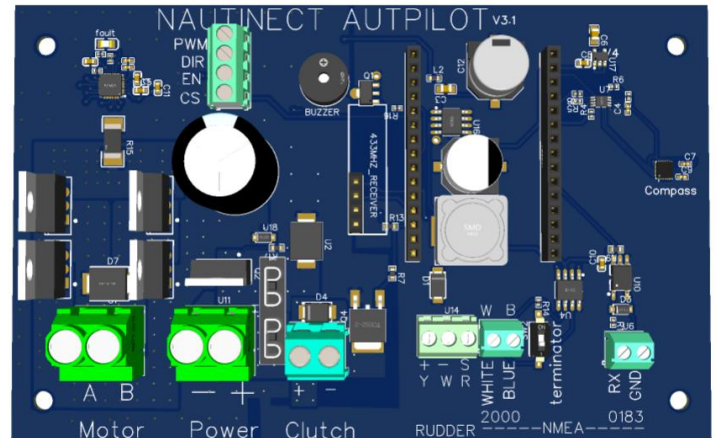
To install the autopilot, you only need to connect 4 wires and screw down the box

Wiring

Power + to the battery positive terminal or switch board with a fuse at the start of the wire. Small motor (tiller drives) 5A fuse, others are 10A to 20A.

Power - to the battery negative terminal

The wires of your Motor/actuator should go to the left terminal. test if the rudder moves right when pressing on the +1 or +10 button. If the rudder moves the wrong way, just switch the wires A and B.



If you install the box outside, insert the rubber seal ring in the lid and cable glands for waterproofing.

Placement

The unit can be placed in any orientation as long as one of the 6 sides is facing to the sky with no more than 20 degree slant (while the boat is at rest). Put on a firm base so that any motor vibrations will be minimized. Make sure it is not close to metal or wires conducting high currents. Place the unit 1 centimeter away for each Amp that a cable is running. The compass works on steel ships, but doesn't give an accurate reading because of the magnetic field deviation. The compass and gyroscopes are calibrated when delivered. Check in the app if the compass needs a new calibration.

More information can be found on my website. You can always contact me or consult the Facebook group.

Disclaimer

The autopilot is intended as a steering aid, and you should always remain at the helm. The autopilot is not aware of its surroundings and relies on sensitive instruments that may be subject to interference. The seller is not responsible for any damage, loss, or accidents resulting from the use of the autopilot. The use of the autopilot is entirely at the buyer's own risk. It is the buyer's responsibility to ensure that the device is suitable and safe for use on their specific boat and in their particular boating conditions.

Actuators

Any Brushed DC motor can be used. When buying a linear actuator, one with end-limit switches is advised. Because when the helm is at its end, and the motor still tries to push, the causes heat and can eventually lead to burns. The autopilot on a straight course should not hit the end of the steering. There is a built-in protection that makes sure that the motor does not run for more than 5 seconds at full speed in a single direction to prevent too much heat generation

Autopilot tuning

Because this autopilot supports a wide variety of motors and type of boats, you fine-tune the characteristics inside the app.